

Name _____
ID# _____

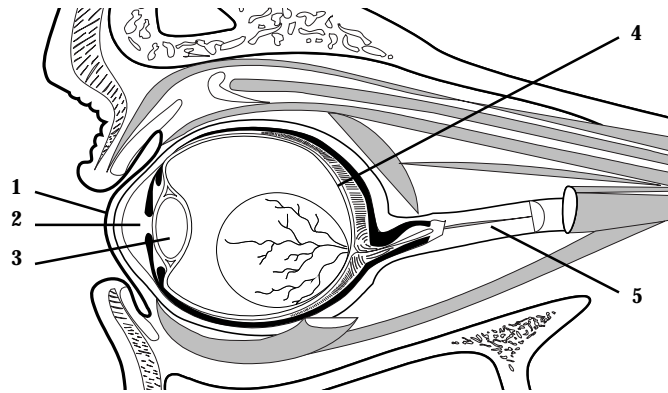


Date _____
Teacher _____

Positively Aging® CHOICES AND CHANGES

UNIT 6 – CHALLENGES AND CHANGES – *Vision* POST TEST

Use the diagram of the human eye to answer question 1–3.



1. What is the name of the structure labeled 3?
 - a. cornea
 - b. lens
 - c. retina
 - d. optic nerve

2. What is the name of the structure labeled 1?
 - a. cornea
 - b. lens
 - c. retina
 - d. optic nerve

3. Which label on the diagram identifies the pupil?
 - a. 1
 - b. 2
 - c. 4
 - d. 5

4. Which structure refracts light to focus images?
 - a. cornea
 - b. lens
 - c. pupil
 - d. retina

UNIT 6 – CHALLENGES AND CHANGES – *Vision* POST TEST

5. What is the name of the circular opening in the iris?
 - a. cornea
 - b. lens
 - c. pupil
 - d. retina

6. Which structure of the eye controls the amount of light that enters the eye?
 - a. aqueous humor
 - b. iris
 - c. lens
 - d. optic nerve

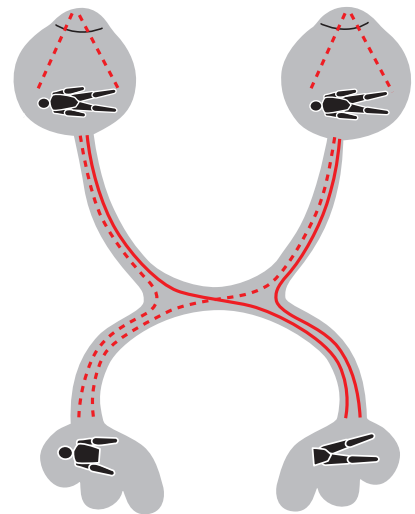
7. In which order do visual images travel from the eye to the brain?
 - a. cornea, lens, retina, optic nerve, visual cortex
 - b. lens, cornea, optic nerve, retina, visual cortex
 - c. cornea, lens, retina, visual cortex, optic nerve
 - d. retina, cornea, lens, visual cortex, optic nerve

Use the diagram on the right of the visual pathway to help answer questions 8 – 10.

8. What is the name of the area or structure where the optic fibers from each eye cross?
 - a. lens
 - b. optic chiasm
 - c. retina
 - d. visual cortex

9. If a person has damage to their right eye, how much of an image would be seen?
 - a. entire image
 - b. left side of image
 - c. right side of image
 - d. no image

10. The right visual cortex has been damaged by a stroke. How would the sight be affected?
 - a. complete blindness would occur
 - b. a partial image would be seen
 - c. complete vision with both eyes
 - d. complete vision with the right eye only



UNIT 6 – CHALLENGES AND CHANGES – *Vision* POST TEST

11. What visual problem could occur if the left optic nerve is damaged?
 - a. loss of depth perception
 - b. blindness in the right eye
 - c. loss of peripheral vision
 - d. blindness in both eyes

12. Where does the image focus for a person with normal vision?
 - a. in front of the retina
 - b. between the lens and the retina
 - c. on the retina
 - d. on the optic nerve

13. Which structure is affected by cataracts?
 - a. aqueous humor
 - b. cornea
 - c. lens
 - d. optic nerve

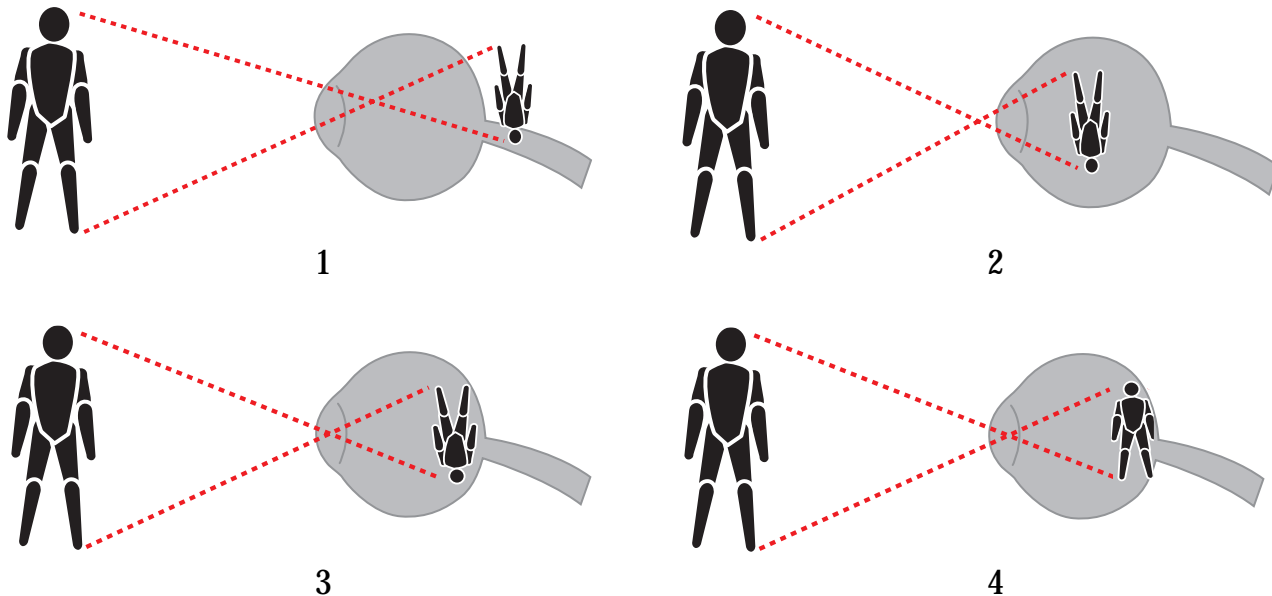
14. Which symptom occurs with the eye disease, macular degeneration?
 - a. loss of half of the visual field
 - b. loss of central vision
 - c. loss of pressure in the eye
 - d. loss of peripheral vision

15. A caregiver for a person with a severe visual impairment should remember to
 - a. place labels on objects in the house.
 - b. face the person when speaking to them.
 - c. rearrange the furniture often.
 - d. leave bright lights on at night.

16. Which of the following would help someone with a visual impairment read?
 - a. provide a lamp with a bare bulb near the reading area
 - b. provide a soft light on the person
 - c. provide a bright light diffused with a shade on the reading material
 - d. provide a soft light and shade on the person and the reading material

UNIT 6 – CHALLENGES AND CHANGES – *Vision* POST TEST

Use the diagram below to answer question 17.



17. Which diagram correctly shows where the image focuses in a person with nearsightedness?

- a. 1
- b. 2
- c. 3
- d. 4

18. Which of the following is the term for farsightedness?

- a. amblyopia
- b. hyperopia
- c. myopia
- d. presbyopia

19. John's vision is reported as 20/20, while Sally's is 20/40. How is John's vision compared to Sally's vision?

- a. John reads at 20 feet what Sally can read at 40 feet.
- b. John can read at 40 feet what Sally reads at 20 feet.
- c. John and Sally read the same letters at 40 feet.
- d. John can read at 20 feet what Sally reads at 60 feet.

UNIT 6 – CHALLENGES AND CHANGES – *Vision* POST TEST

20. Tom's vision is 20/20. What would Tom's vision if he could still read the same letters at 40 feet?
- a. 10/20
 - b. 20/10
 - c. 10/40
 - d. 40/10
21. A school nurse uses an eye chart as a vision screening tool. What is she actually measuring?
- a. visual acuity
 - b. visual field
 - c. contrast sensitivity
 - d. depth perception
22. In visual acuity ratios, what does the top number indicate?
- a. the distance from which the letter is viewed recorded in feet.
 - b. the angle formed by the letter and the eye recorded in minutes of arc.
 - c. the height of the letters being read recorded in inches.
 - d. the range of peripheral vision recorded in degrees.